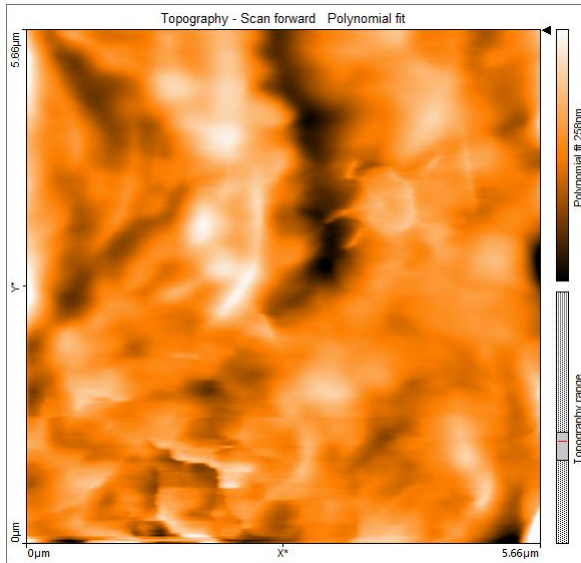
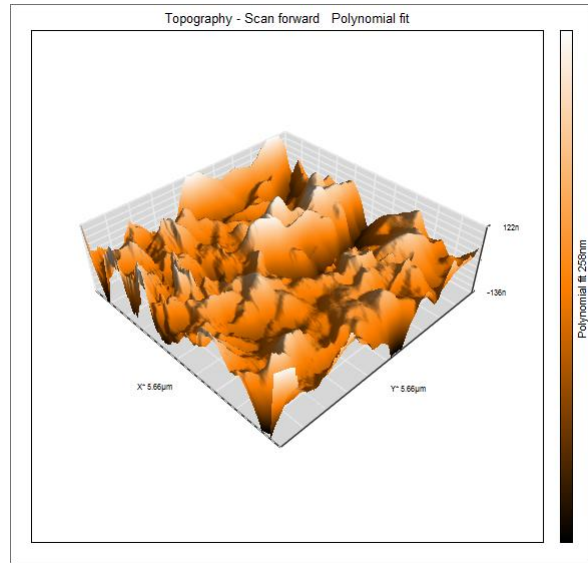


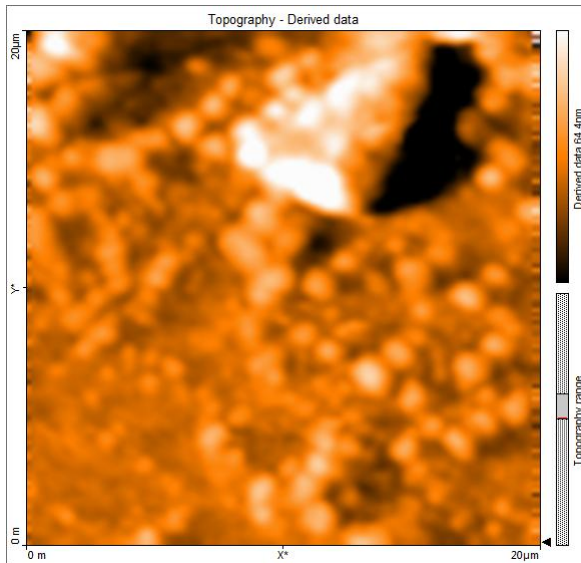
# AFM images of different materials



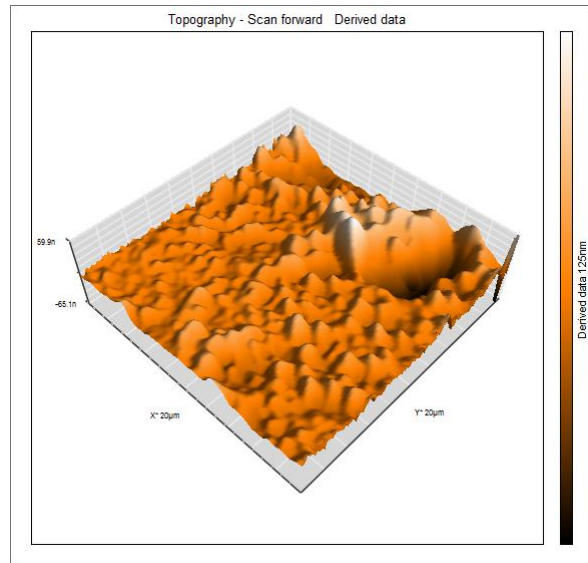
2D view of NiFe<sub>2</sub>O<sub>4</sub>/CNT particle surface



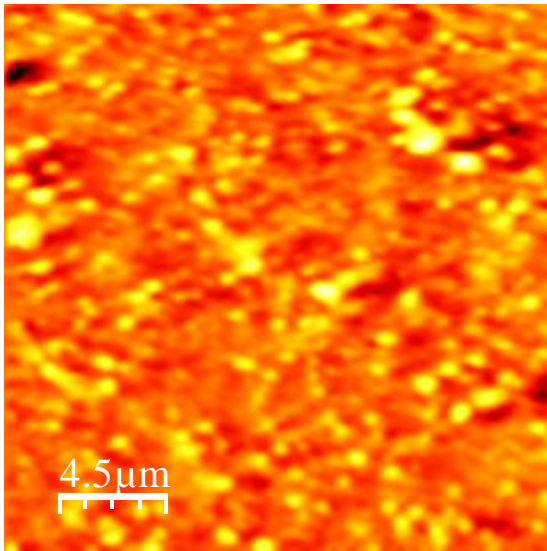
surface topography of NiFe<sub>2</sub>O<sub>4</sub>/CNT particle



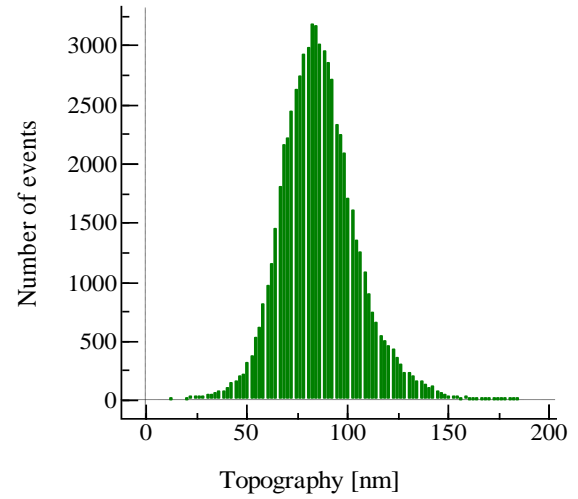
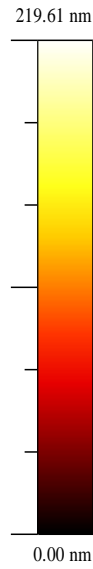
2D view of Ag nanoparticles on a glass slide



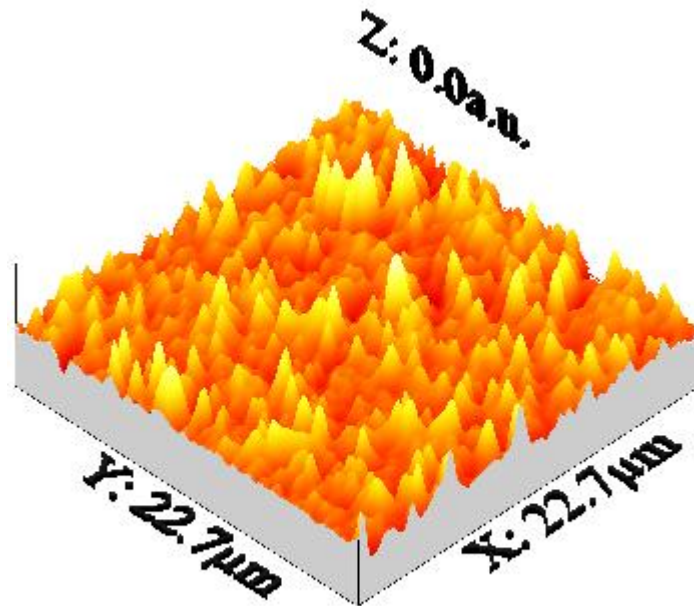
3D view of Ag nanoparticles on a glass slide



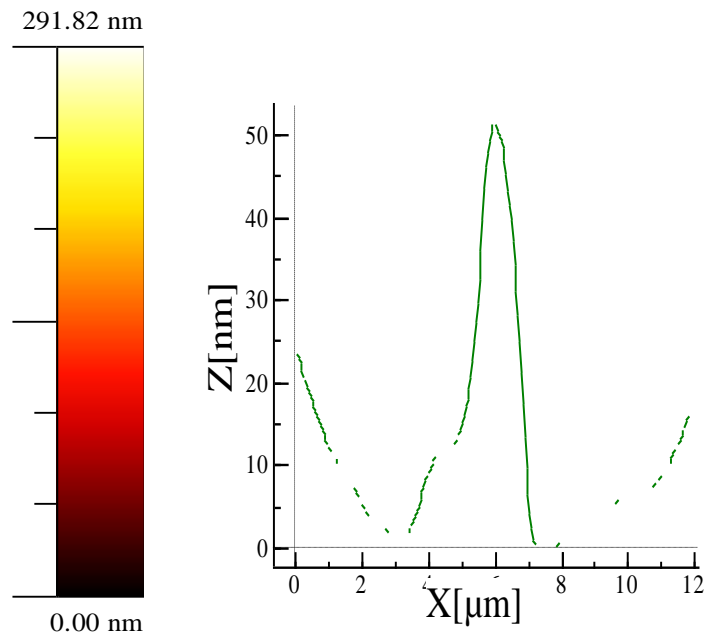
2D view of Ag nanoparticles on a glass slide after image processing



Height distribution diagram of Ag nanoparticles related to left image

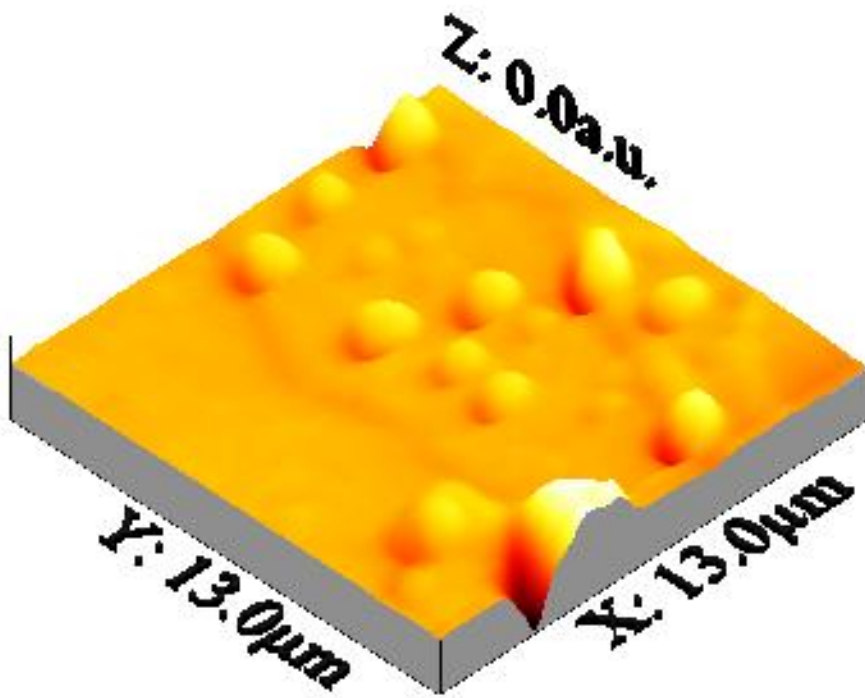


3D view of Ag nanoparticles on a glass slide related to above left image

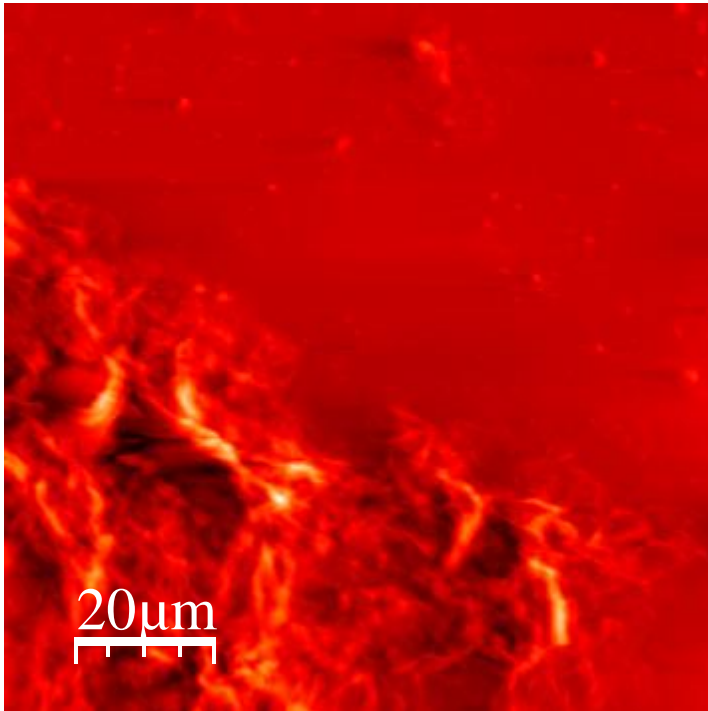


2D view of Reduced Graphene Oxide nanosheet fixed on a glass slide

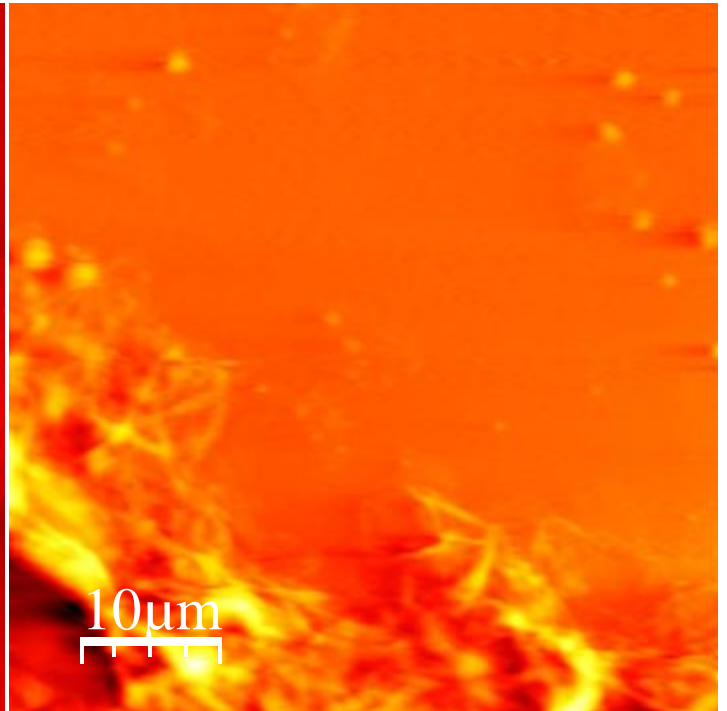
Height vs. X diagram for line inserted on left image



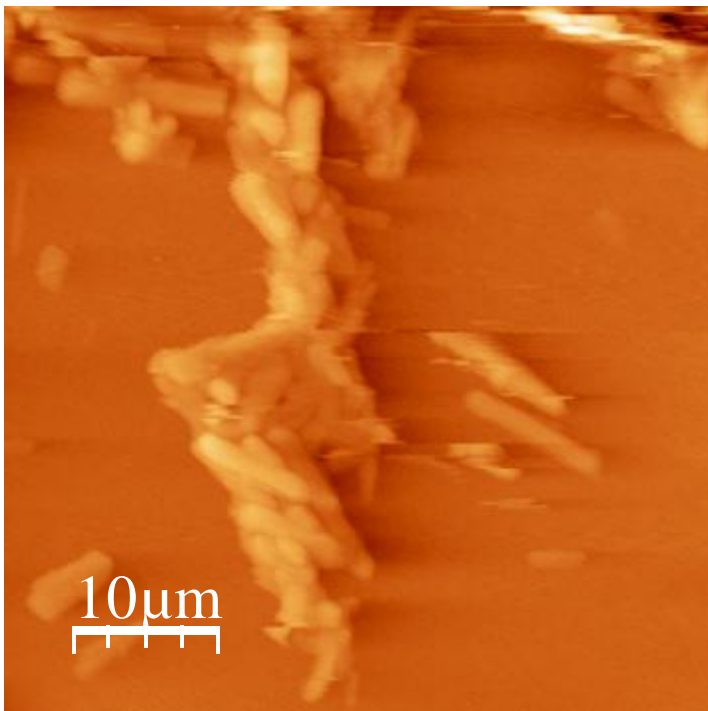
3D view related to above left image



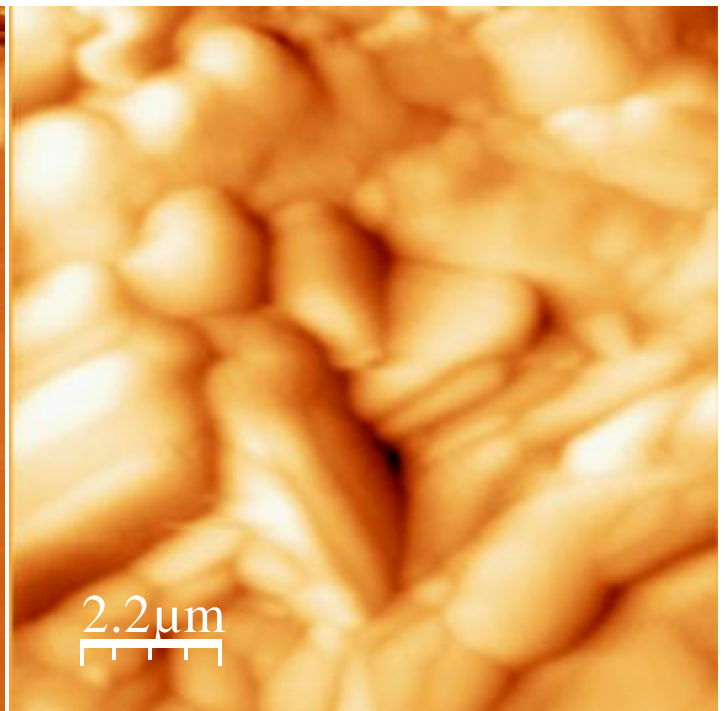
2D view of agglomeration of Reduced Graphene Oxide nanosheets fixed on a glass slide



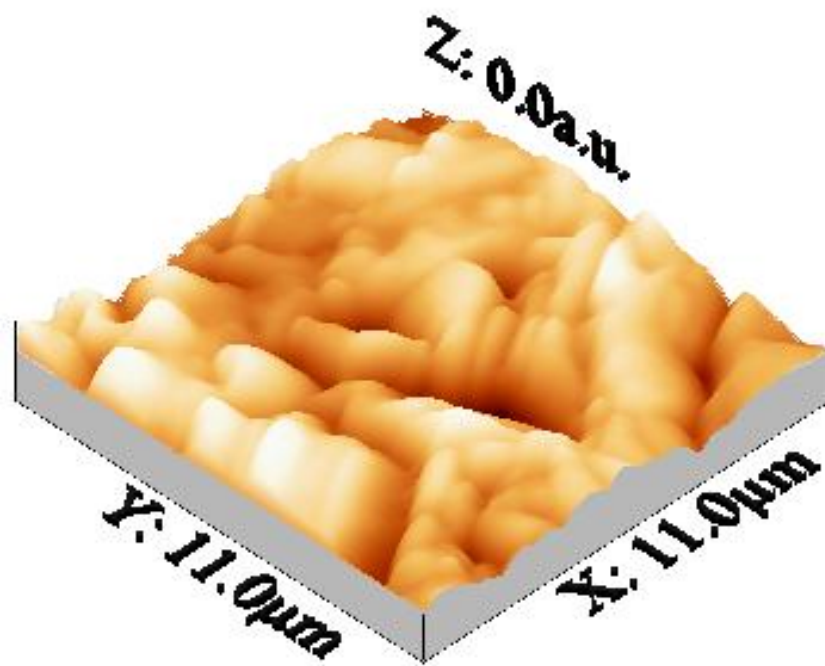
2D enlarged view of left image



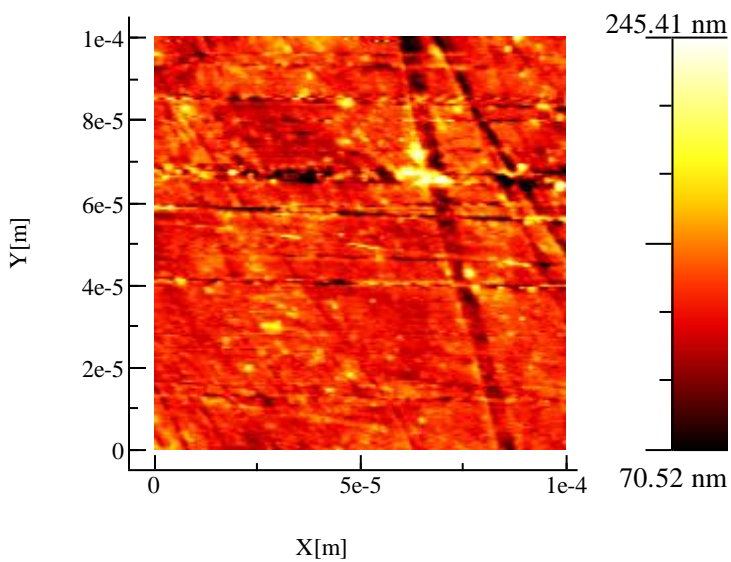
2D view of micron-scale raw ZnO particles



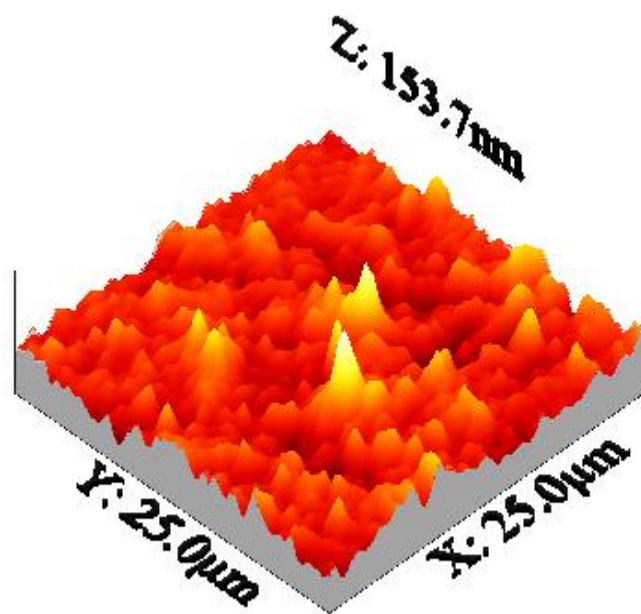
2D view of milled ZnO particles



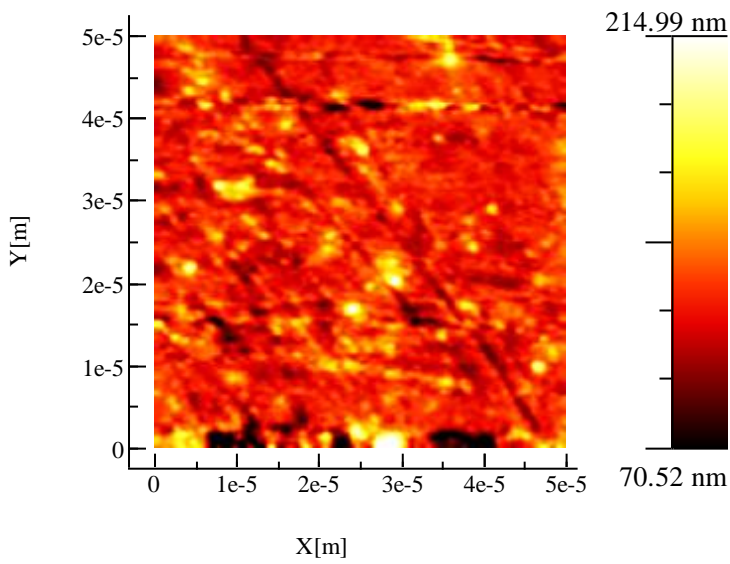
3D view of milled ZnO particles



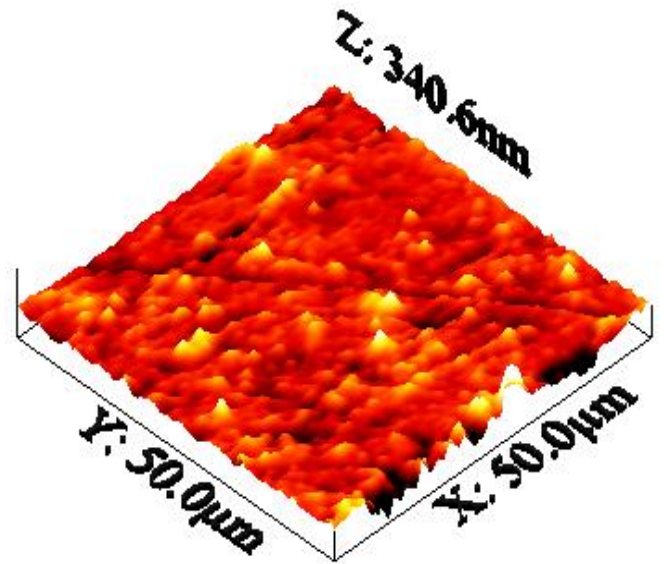
2D view of Mg/SiC nanocomposite surface



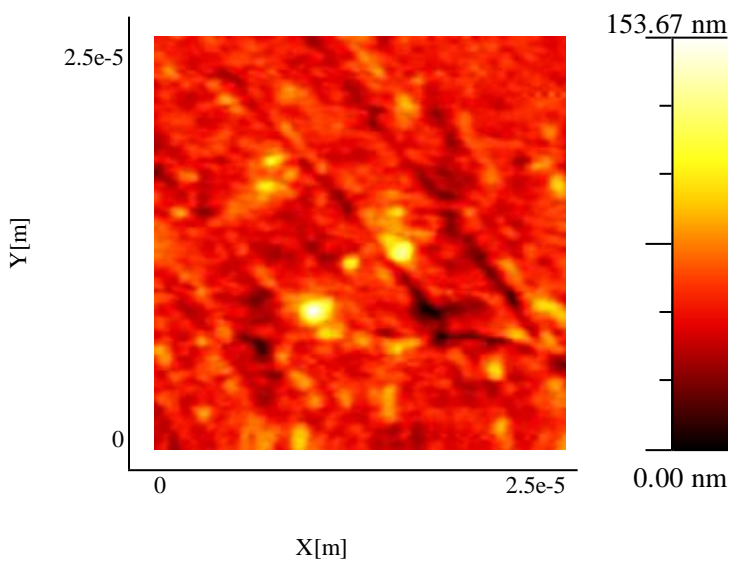
surface topography of a Mg/SiC nanocomposite sample



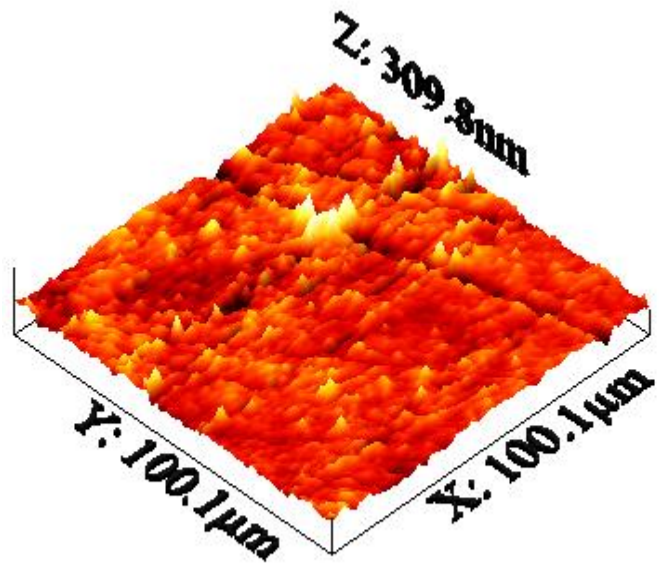
2D view of Mg/SiC nanocomposite surface



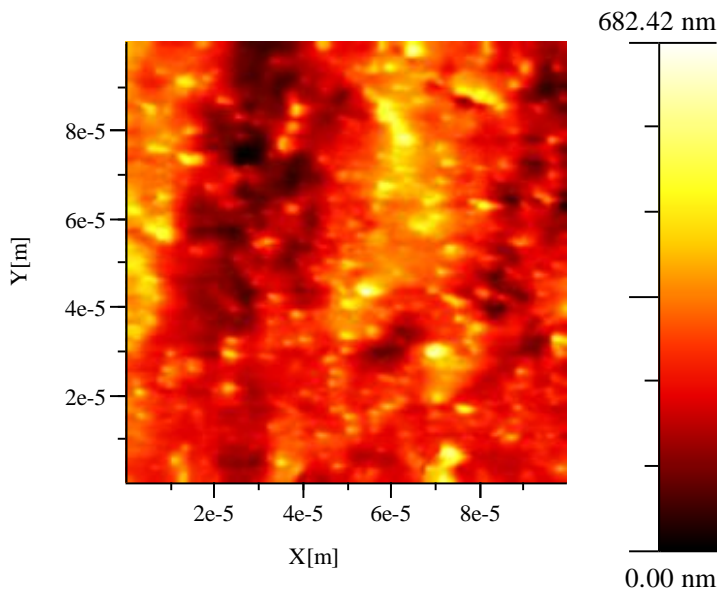
Surface topography of a Mg/SiC nanocomposite sample



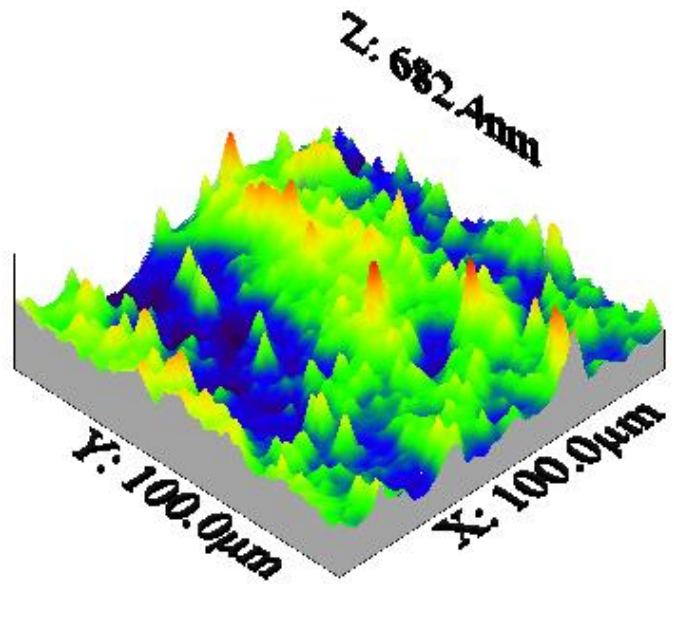
2D view of Mg/SiC nanocomposite surface



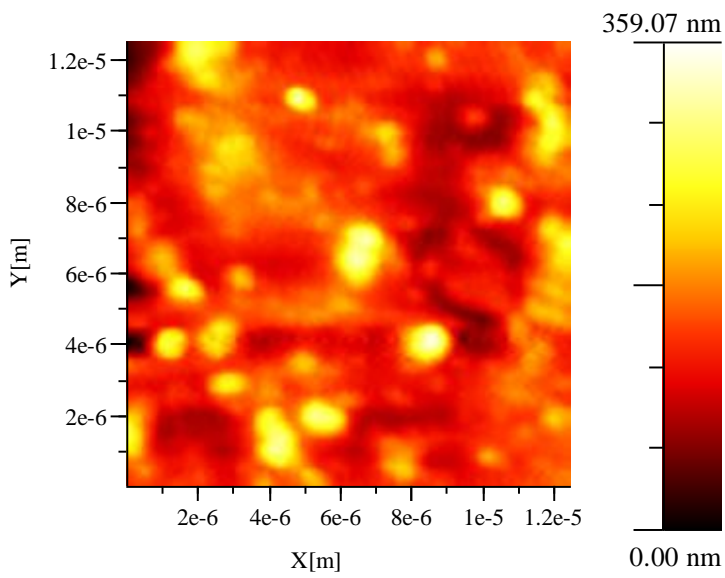
Surface topography of a Mg/SiC nanocomposite sample



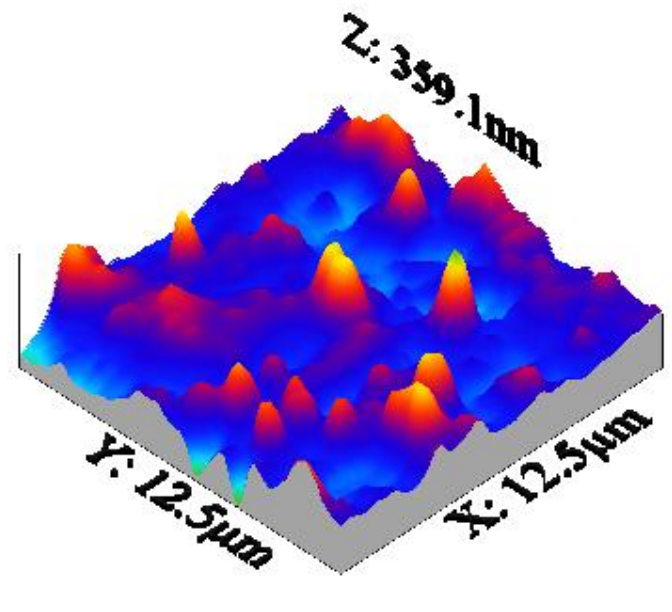
2D view of tile surface



Surface topography of tile sample



2D view tile surface



Surface topography of tile sample